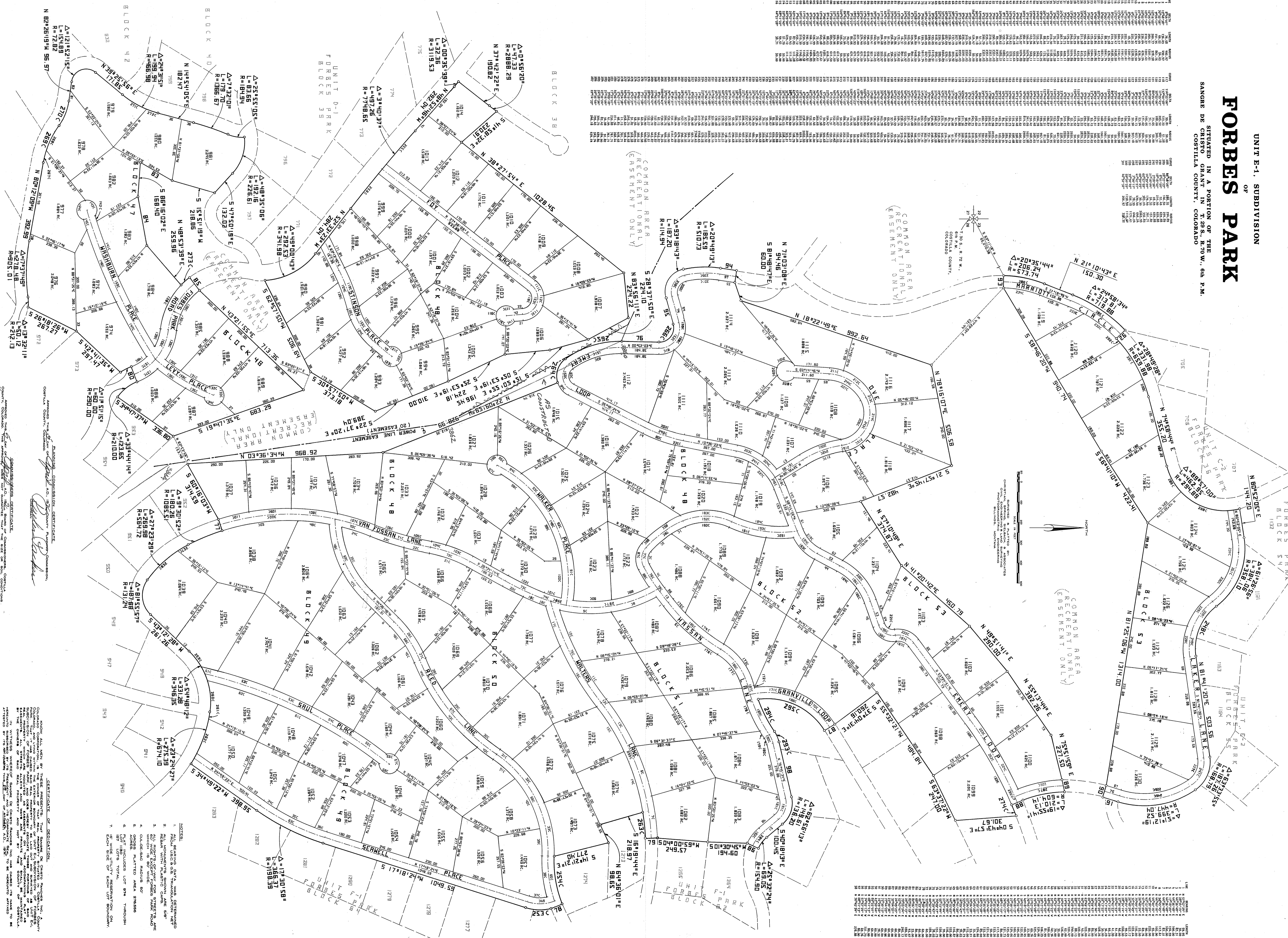


FORBES PARK

UNIT E-1, SUBDIVISION
OF

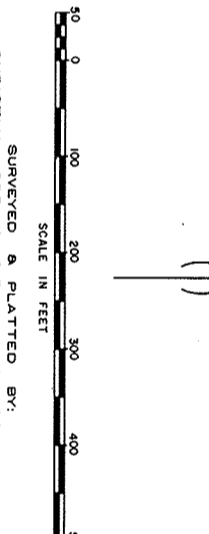
SITuated IN A PORTION OF THE
GREAT PLAINS SUBDIVISION, 6th P.M.,
SANGRE DE CRISTO COUNTY, COLORADO



(COMMON AREA
RECREATIONAL ONLY
EASEMENT ONLY)

(COMMON AREA
RECREATIONAL ONLY
EASEMENT ONLY)

(COMMON AREA
RECREATIONAL ONLY
EASEMENT ONLY)



NOTES:

1. ALL DISTANCES ARE IN FEET AND DECIMALS THEREOF.
2. ALL BEARINGS ARE TRUE BEARINGS.
3. ALL CORNERS ARE TO BE MARKED AS SHOWN ON THIS PLAN.
4. ALL AREAS OF COMMON AREAS ARE TO BE MAINTAINED AS SUCH.
5. ALL UTILITIES ARE TO BE PLACED AS SHOWN ON THIS PLAN.
6. ALL EASEMENTS ARE TO BE MAINTAINED AS SHOWN ON THIS PLAN.
7. ALL RIGHTS RESERVED.

DEED RESTRICTIONS RECORDED IN BOOK PAGE CORTILLA COUNTY

STATE OF COLORADO
COUNTY OF SANGRE DE CRISTO

PLANNING COMMISSION, CERTIFICATE
I, the undersigned, Planning Commissioner of Sangre de Cristo County, Colorado, do hereby certify that the foregoing subdivision of land into lots and blocks is in conformity with the plan and map of the subdivision as filed for public use in the office of the County Clerk and Recorder, and that the same conforms to the requirements of the Subdivision Map Act, C.R.S. 30-2-101, et seq., and the provisions of the Subdivision Map Act, C.R.S. 30-2-101, et seq., and the provisions of the Subdivision Map Act, C.R.S. 30-2-101, et seq.

CLERK AND RECORDER, CERTIFICATE
I, the undersigned, Clerk and Recorder of Sangre de Cristo County, Colorado, do hereby certify that the foregoing subdivision of land into lots and blocks is in conformity with the plan and map of the subdivision as filed for public use in the office of the County Clerk and Recorder, and that the same conforms to the requirements of the Subdivision Map Act, C.R.S. 30-2-101, et seq., and the provisions of the Subdivision Map Act, C.R.S. 30-2-101, et seq., and the provisions of the Subdivision Map Act, C.R.S. 30-2-101, et seq.

CERTIFICATE OF DESIGNATION
I, the undersigned, County Clerk and Recorder of Sangre de Cristo County, Colorado, do hereby certify that the foregoing subdivision of land into lots and blocks is in conformity with the plan and map of the subdivision as filed for public use in the office of the County Clerk and Recorder, and that the same conforms to the requirements of the Subdivision Map Act, C.R.S. 30-2-101, et seq., and the provisions of the Subdivision Map Act, C.R.S. 30-2-101, et seq., and the provisions of the Subdivision Map Act, C.R.S. 30-2-101, et seq.

12475

[Signature]
1/14/21